

**JEWISH LIFE**  
**IN**  
**EAST RAND. MIDRAND.**  
**SOUTHERN GREAT**  
**ESCARPMENT**  
**&**  
**SOUTHERN HIGHVELD**

# **STREET & TOWN VIEWS**

# BOKSBURG – Angelo Gold Mine, 1890



# GERMISTON - General view 1890's





# BETHAL - General Botha Meeting 1908

THE PREMIER'S (GEN. BOTHA) VISIT TO BETHAL FEB. 1908



Meeting at Festenstein & Fried's Store

FAMILY GENERAL  
STORE - 1908

# NIGEL – Gold Mine c. 1909



# GERMISTON LAKE – c. 1910





# HEIDELBERG – Market St c.1910





# BENONI – Old fire station



# CAROLINA – 1925





# BRAKPAN – Modder Str, c. 1927



**SHULS**



# GERMISTON – First shul opened in 1903



# GERMISTON – 2nd shul consecrated in 1930





# VOLKSRUST – The cornerstone was laid in 1904



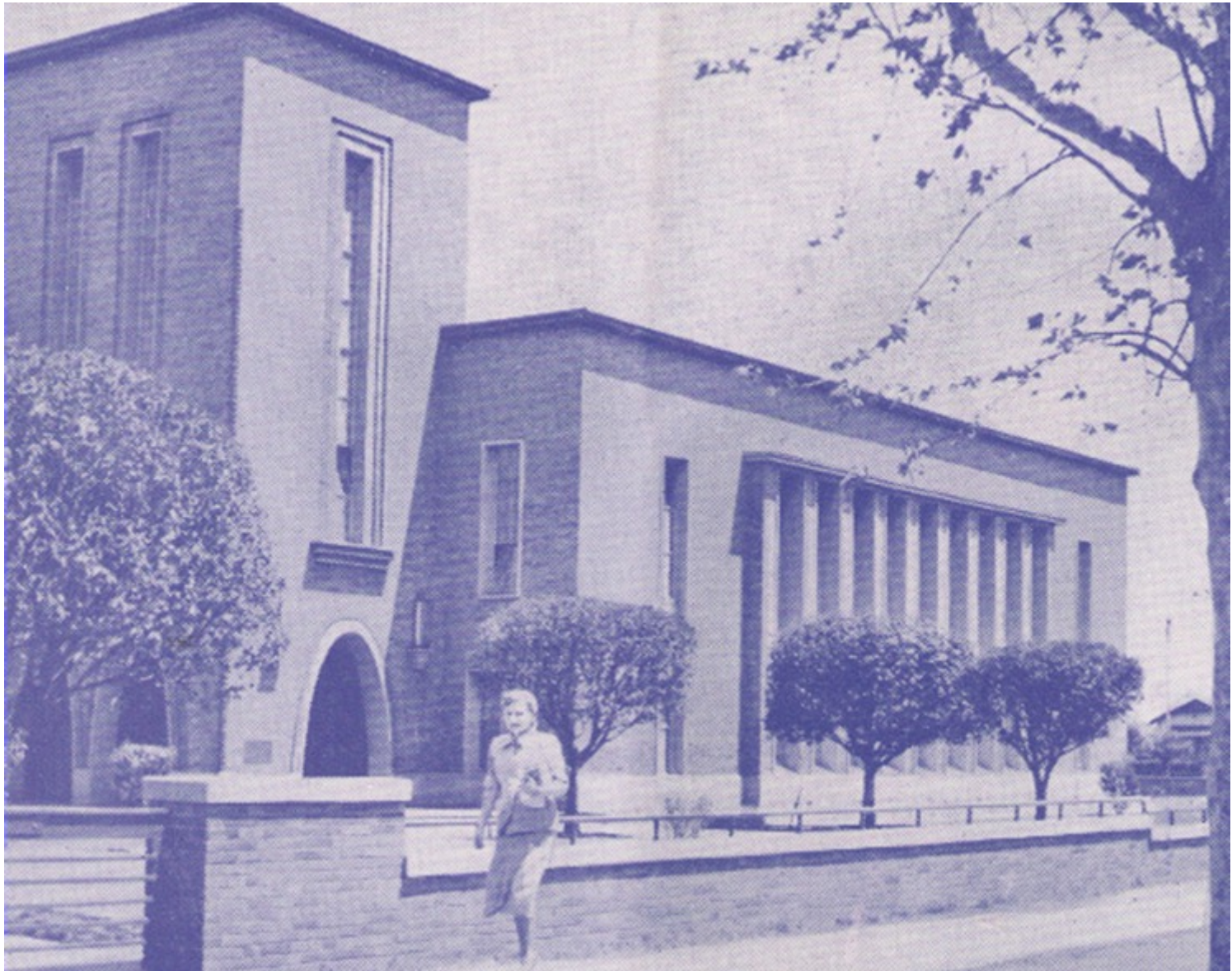
# BENONI – Original shul built in 1908



The original Benoni Synagogue. The building still stands at 26 Woburn Avenue and houses D and J Motors.



# **BENONI – Park Street Shul consecrated 1933**



# **SPRINGS** – Gates of Hope opened 1908





# SPRINGS – Built 1951



# ERMELO – Consecrated in 1909





# BOKSBURG NORTH - 1915



# BETHAL



THIS STONE WAS LAID BY  
GEN. THE RIGHT HON. LOUIS BOTHA  
P. C. PRIME MINISTER  
ON  
30TH. AUG. 1915. 20TH. ELLUL 5675.  
CONSECRATED BY  
RABBI DR. J. L. LANDAU  
M.A. PH. D

# HEIDELBERG – Foundation stone laid in 1929



HEIDELBERG TRANSVAAL SYNAGOGUE  
(Photo from SAJBD Archives) 28/02/2002



# **BRAKPAN** – Opened in 1931





# NIGEL - 1938



# VOORTREKKERHOOGTE - 1942



# DELMAS - 1944





# LEANDRA - 1963



# EDENVALE - 1976



**ECONOMIC**



**ECONOMIC**



**BUSINESSES**

# BENONI – Ginsberg Bros, c1890



# SPRINGS – Epstein's store c. 1900





# ERMELO – c1904



# EDENVALE – founded 1909

## Sneech's Stores EDENVALE

FOUNDED OCTOBER 15, 1909

25th Anniversary Celebrations  
November to December, 1934

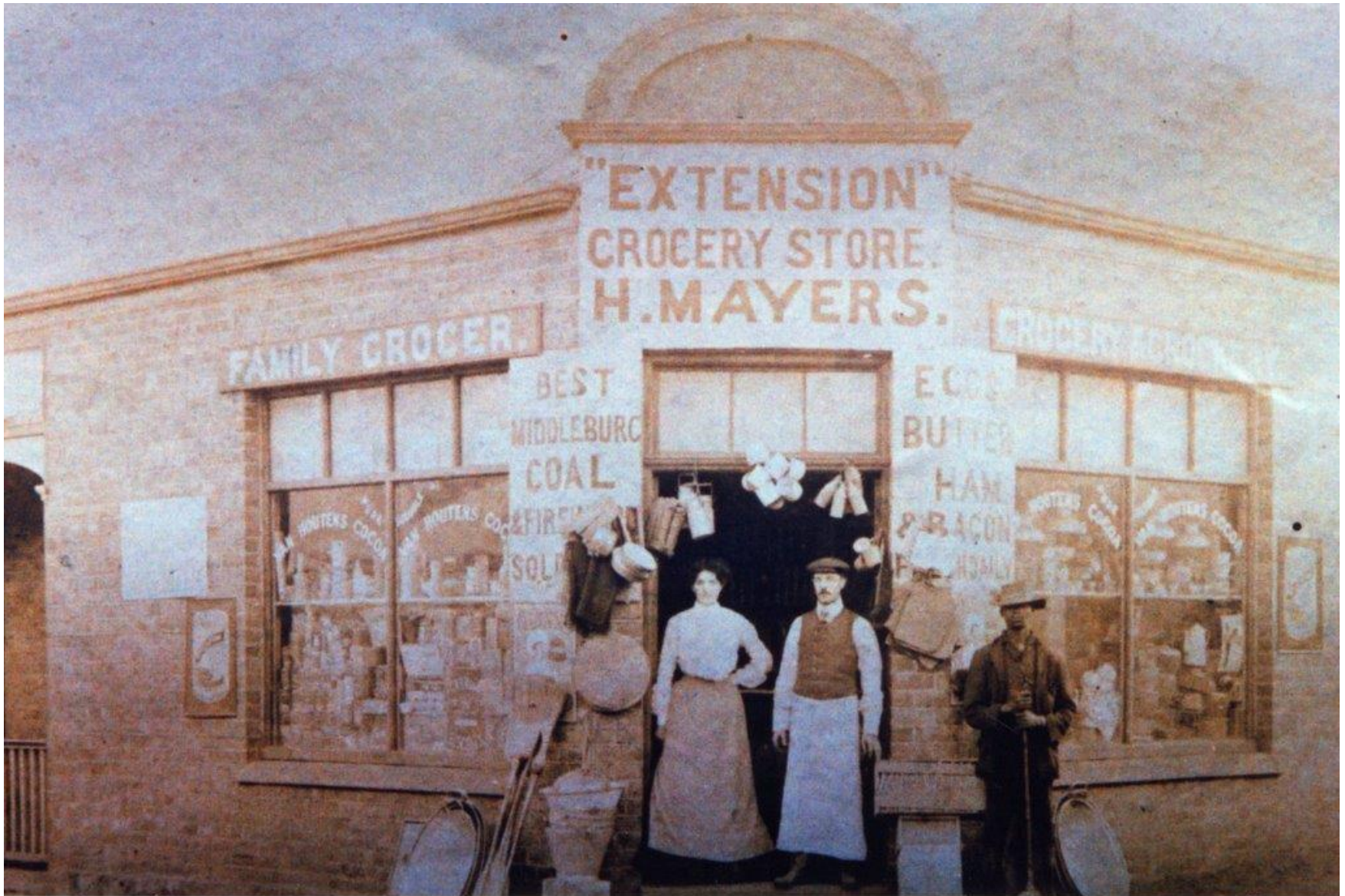


SNEECH'S STORES, EDENVALE

Echo Printing Works (Pty.), Ltd., Jhb.



# VOLKSRUST – c1910





# GINGER BEER – early 1900's



# BENONI – 1911



# BETHAL – Chemist c1920





# SPRINGS – Watchmaker & Jeweler c1920



# GERMISTON – Trouser factory 1920's



**ECONOMIC**





# STANDERTON –c1910



# BETHAL –c1913





# PIET RETIEF –c1918





# VOLKSRUST –1922

The Most Popular Hotel in VOLKSRUST

Three Minutes from Railway Station

THE  
**GRAND HOTEL**

---



**A. FRIEDLANDER, Proprietor**

---

---

Electric Light throughout the Premises and  
everything Up-to-date

---

---

'Phone No. 46   P.O. Box 69, Volksrust   Telegrams: "FRIEDLANDER"

**ECONOMIC**

 **FARMING**

# BETHAL – early 1900's



Threshing mielies on the Goldstein farm in the early 1900s with the old steam threshing machine.  
(Photo supplied by Eli Goldstein)



# BALFOUR – c1919



# KINROSS – c1930

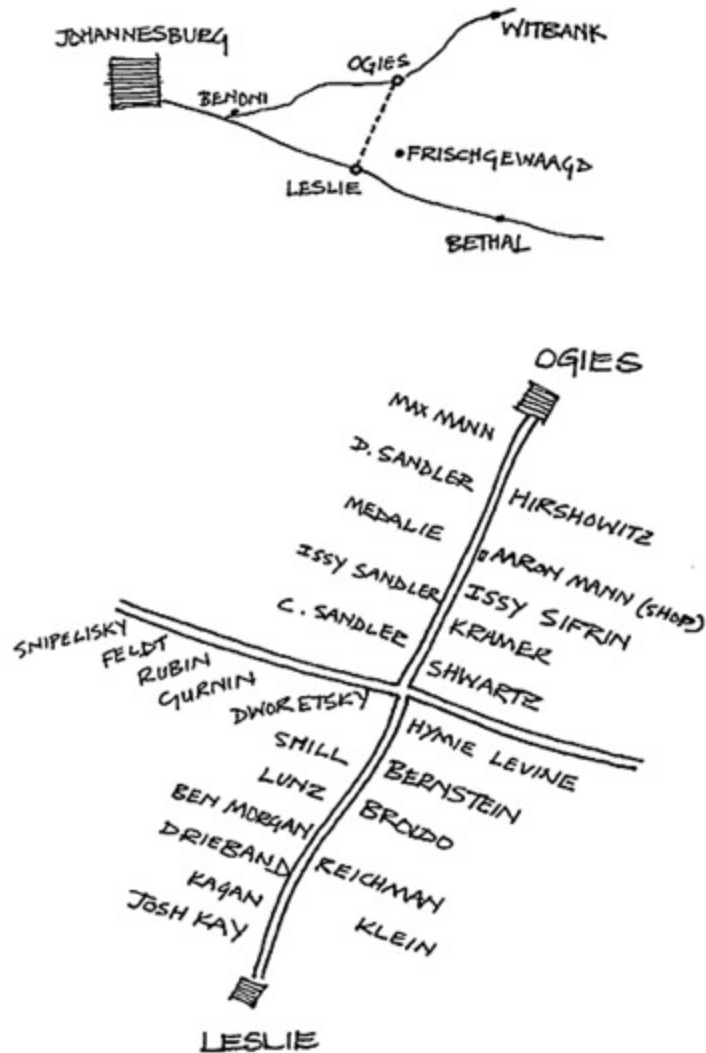


# NIGEL – 1940's





# JEWISH FARMERS - OGIES TO LESLIE 1950's-1970's



Jewish Farmers in the 30-mile strip between  
Ogies and Leslie in the 1950s, 60s and 70s

**DAILY LIFE**

**DAILY LIFE**





# SPRINGS – 1898



# BREYTEN



# BETHAL - 1920's

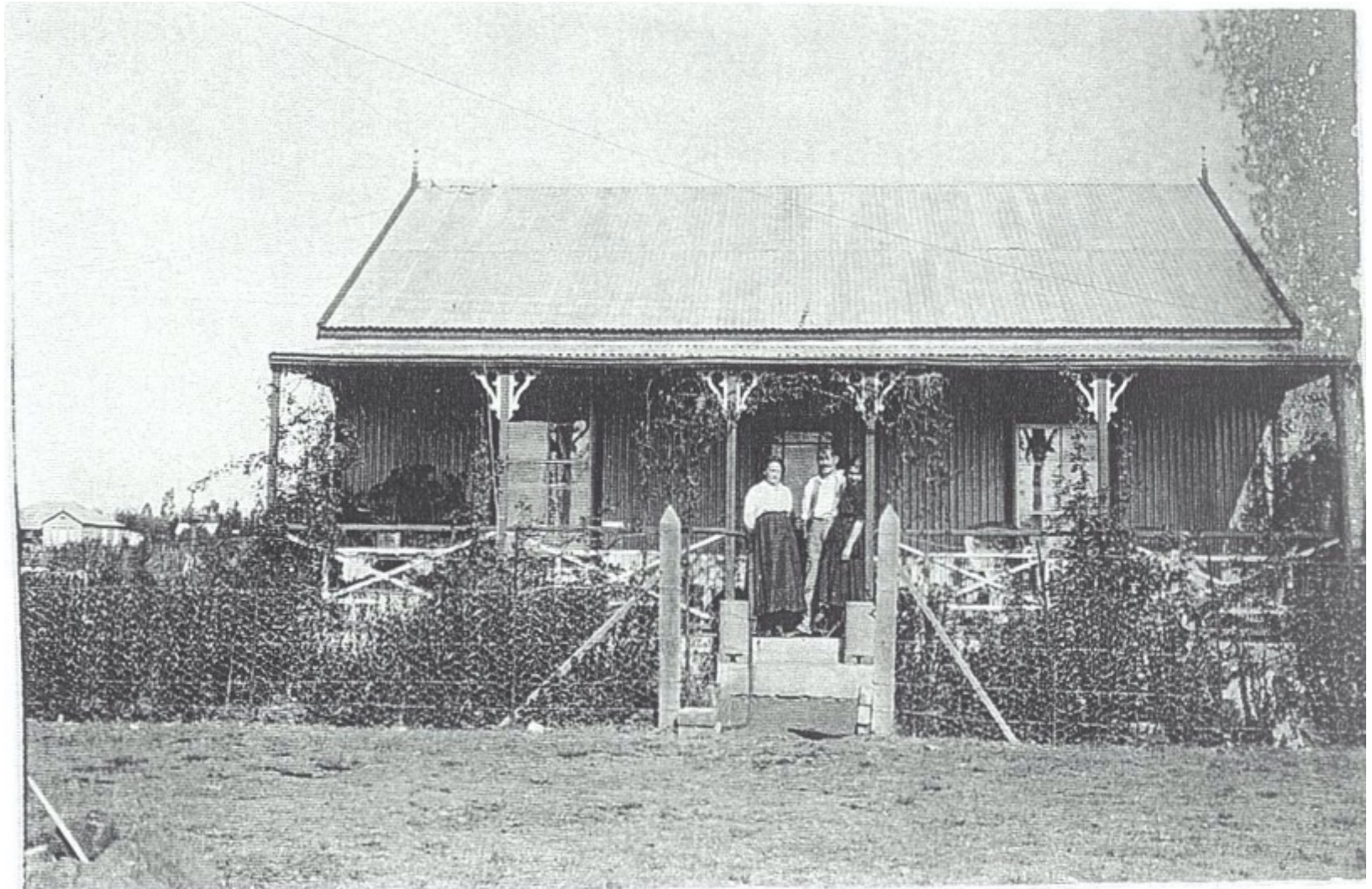


Photo of Morris Friedlands house in Bethal in the 1920s.  
Photo sent by Eli Goldstein.



# BENONI - c1914



# PIET RETIEF - c1920



# BETHAL - c1920's





# AMERSFOORT - c1930



# GERMISTON - 1920



**DAILY LIFE**

 **TRANSPORT**



# AMERSFOORT - c1912



# GERMISTON - 1926





# KINROSS - 1920





# BENONI - c1930



We have a  
motor car



# PIET RETIEF - 1933





# BREYTEN - 1934





# SPRINGS - 1937



**WEDDINGS**

# GERMISTON – Louis Hersh & Fanny Simon, c1900





# WAKKERSTROOM - c1910



# VOLKSRUST – Ray Berman & Jacob Miller, 1917



# AMERSFOORT – Hannah & Joe Sandler, 1930





# BALFOUR – 1950



**THE END**